



The Langley.

A superb 4-bed home.



enquiry@help-to-own.com

The Langley is a stunning four-bedroom town house. It includes parking provision with an integral undercroft, hallway with ground floor WC and open plan kitchen/dining with access to the rear garden.

The first floor consists of a family bathroom, a bedroom, and a living room with a balcony overlooking the rear garden. The second floor has the master bedroom with ensuite, 2 further bedrooms and a family bathroom.

Ground Floor

Room Dimensions*

Kitchen/Dining 3.15m x 4.36m
10'4" x 14'3"

First Floor

Room Dimensions*

Living Room** 3.18m x 3.62m
10'5" x 11'10"

Bedroom 1 3.20m x 3.53m
10'5" x 11'7"

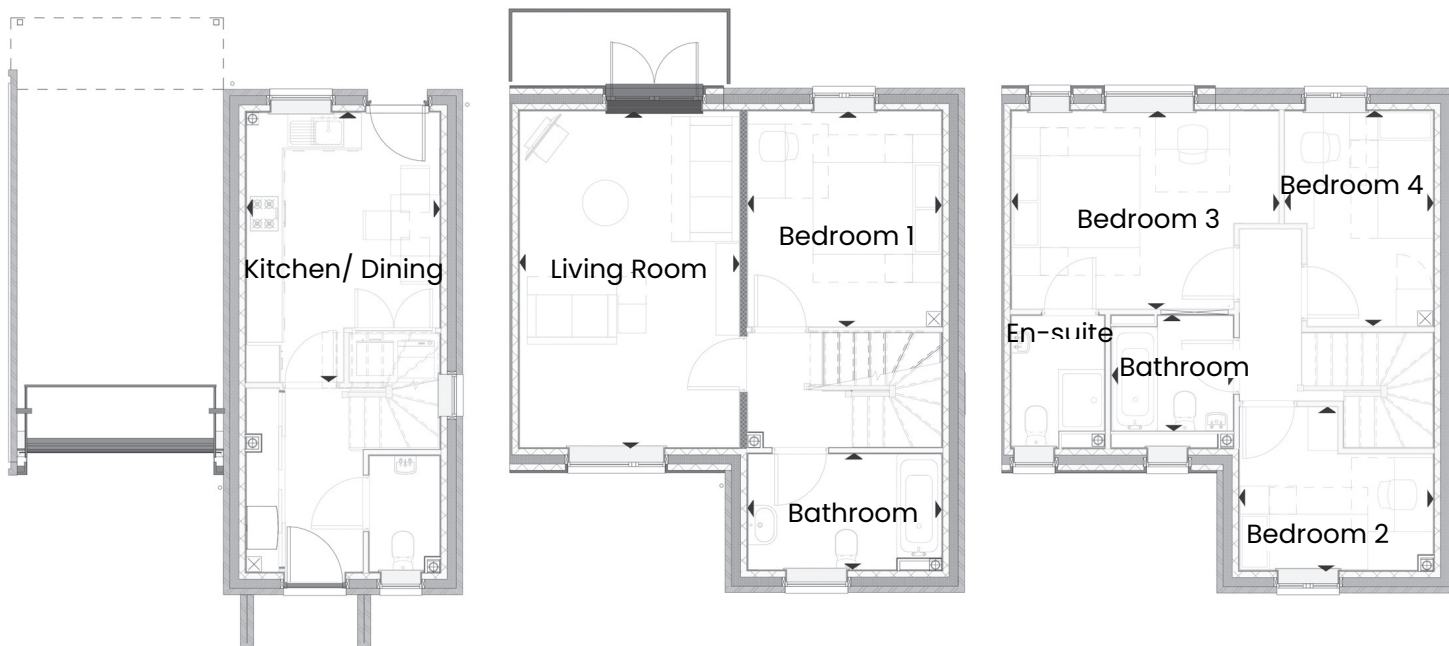
Second Floor

Room Dimensions*

Bedroom 2 3.15m x 2.66m
10'4" x 8'8"

Bedroom 3 4.35m x 3.23m
10'4" x 8'8"

Bedroom 4 2.42m x 3.51m
7'11" x 11'6"



* Specifications: This information is for guidance only and does not form any part of a contract or constitute a warranty. Illustrations are of typical elevations and may vary. Floor plan are not drawn to scale.

Room dimensions are subject to a +/- 50mm(2") tolerance and are based on a maximum dimensions in a each room. **TBC.