



The Hayes.

A fabulous 3-bed home.



enquiry@help-to-own.com

The Hayes is a fabulous three bedroom town house. It includes parking provision with an integral undercroft, on the ground floor is a hallway with WC and a open plan kitchen/diner from which there is access to the rear garden.

The first floor consists of a family bathroom, two bedrooms, along with a living room with a Juliet balcony overlooking the rear garden. The second floor has a stunning master suite with an ensuite, dressing area and an outside terrace.

Ground Floor

Room Dimensions*

Kitchen/Dining 3.27m x 3.69m
10'8" x 12'1"

First Floor

Room Dimensions*

Living Room 3.17m x 4.79m
10'5" x 15'8"

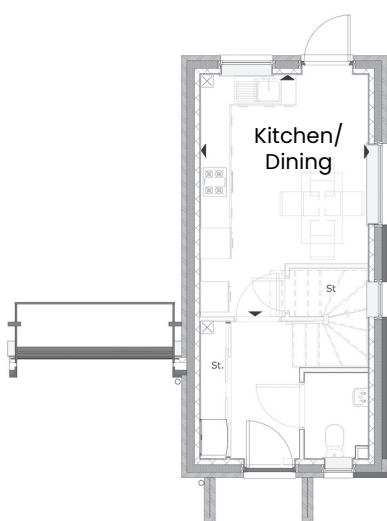
Bedroom 2 3.56m x 2.22m
11'8" x 7'3"

Bedroom 3 2.11m x 3.70m
6'11" x 12'1"

Second Floor

Room Dimensions*

Bedroom 1 3.26m x 3.70m
10'8" x 12'1"



* Specifications: This information is for guidance only and does not form any part of a contract or constitute a warranty. Illustrations are of typical elevations and may vary. Floor plan are not drawn to scale.

Room dimensions are subject to a +/- 50mm(2") tolerance and are based on a maximum dimensions in a each room.