



The Elder.

A spacious 3-bed home.



enquiry@help-to-own.com

The Elder is a spacious three-bedroom townhouse. Along with parking provision, this property benefits from an open plan kitchen / diner with access to the rear garden as well as storage area. The first floor consists of a living room with Juliet balcony. A WC and bedroom three is also located on this level.

The second floor has the master bedroom, further bedroom and a family bathroom.

Ground Floor

Room Dimensions*

Kitchen/Dining** 4.21m x 5.80m
13'9" x 19'0"

First Floor

Room Dimensions*

Living Room** 4.17m x 4.02m
13'8" x 13'2"

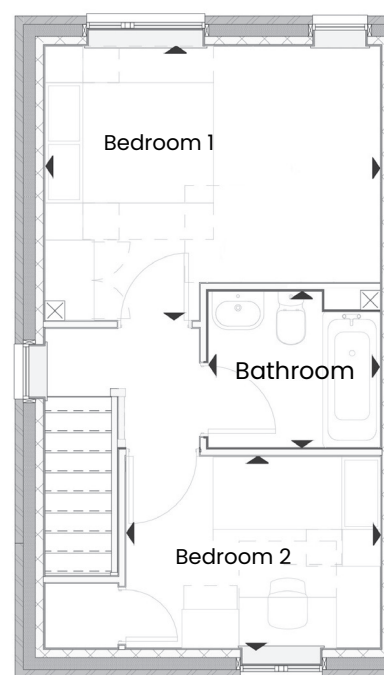
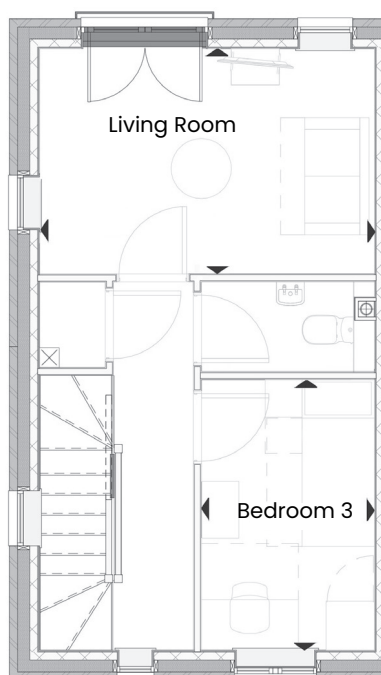
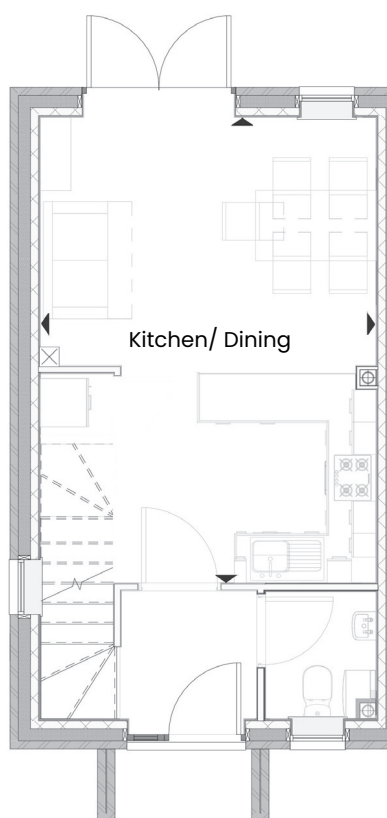
Bedroom 3 2.15m x 3.37m
7'0" x 11'0"

Second Floor

Room Dimensions*

Bedroom 1 4.20m x 3.00m
13'9" x 9'10"

Bedroom 2 3.16m x 2.38m
10'4" x 7'9"



* Specifications: This information is for guidance only and does not form any part of a contract or constitute a warranty. Illustrations are of typical elevations and may vary. Floor plan are not drawn to scale.

Room dimensions are subject to a +/- 50mm(2") tolerance and are based on a maximum dimensions in a each room. **TBC.