



The Dhami.

A stunning 3-bed home.



enquiry@help-to-own.com

The Dhami is a stunning three-bedroom home. Along with parking provision, this property has a hallway with access to the ground floor WC. A separate living room and open plan kitchen/diner with access to the rear garden.

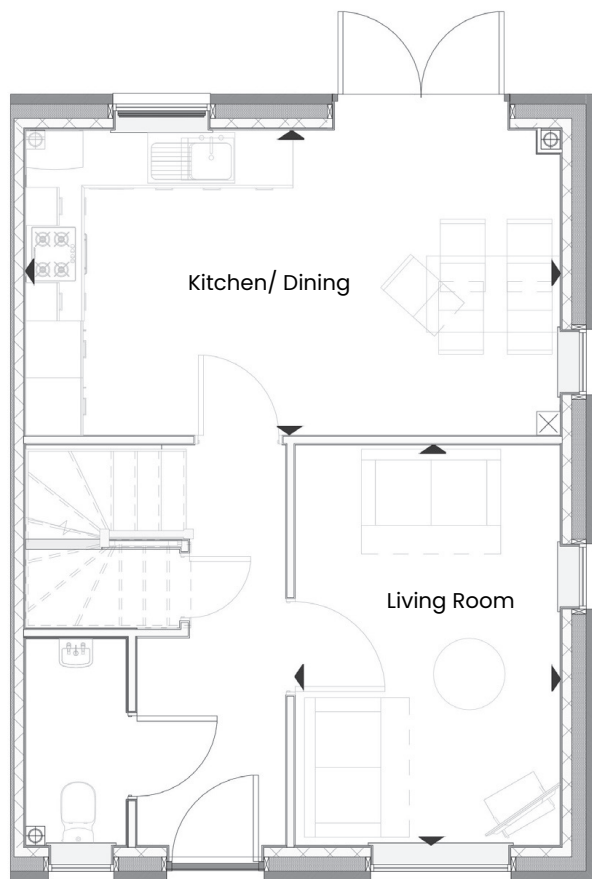
The first floor consists of three bedrooms including the master bedroom with ensuite and a family bathroom.

Ground Floor

Room Dimensions*

Kitchen/Dining 5.59m x 3.20m
18'4" x 10'6"

Living 2.79m x 4.20m
9'2" x 13'9"



Ground Floor

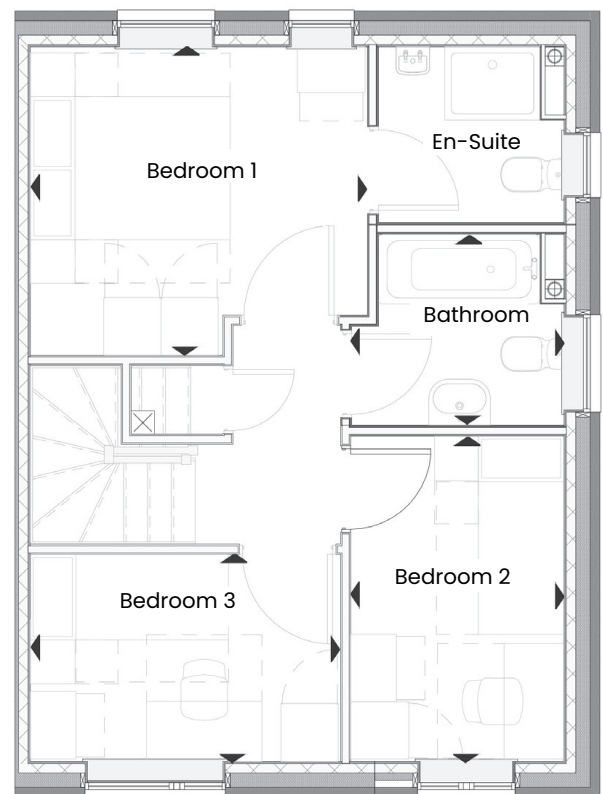
First Floor

Room Dimensions*

Bedroom 1 3.56m x 3.24m
11'8" x 10'7"

Bedroom 2 2.25m x 3.42m
7'4" x 11'2"

Bedroom 3 3.29m x 2.17m
10'9" x 7'1"



First Floor

* Specifications: This information is for guidance only and does not form any part of a contract or constitute a warranty. Illustrations are of typical elevations and may vary. Floor plan are not drawn to scale.

Room dimensions are subject to a +/- 50mm(2") tolerance and are based on a maximum dimensions in a each room.