



The Davenport.

A superb 3-bed home.



enquiry@help-to-own.com

The Davenport is a superb three-bedroom town house. Along with parking provision and undercroft, this property has a ground floor WC, open plan kitchen, dining and living area.

The first floor consists of three bedrooms, a family bathroom and the main living room with French doors opening onto a balcony.

Ground Floor

Room Dimensions*

Kitchen/Dining 4.24m x 5.76m
13'11" x 18'10"

First Floor

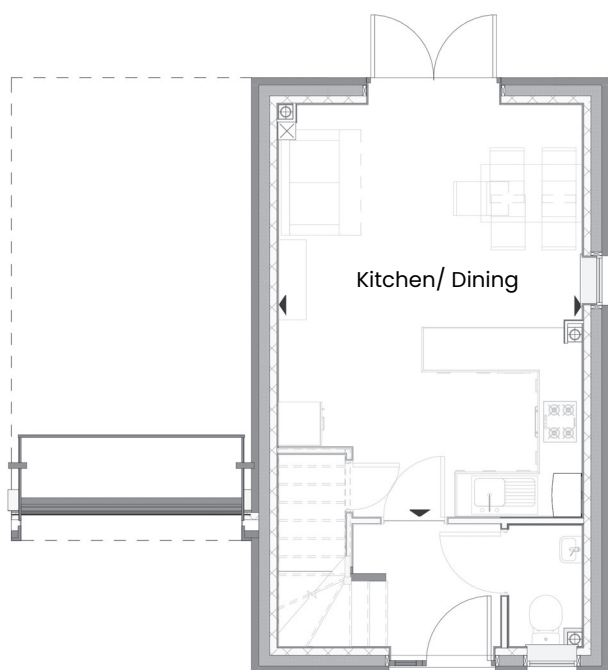
Room Dimensions*

Living 2.88m x 3.58m
9'5" x 11'9"

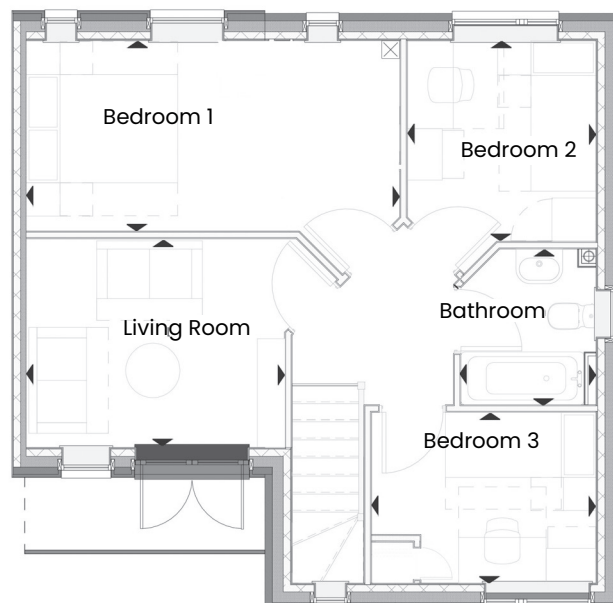
Bedroom 1 5.20m x 2.67m
17'1" x 8'9"

Bedroom 2 2.30m x 2.77m
8'6" x 9'5"

Bedroom 3 3.12m x 2.63m
10'3" x 7'8"



Ground Floor



First Floor

* Specifications: This information is for guidance only and does not form any part of a contract or constitute a warranty. Illustrations are of typical elevations and may vary. Floor plan are not drawn to scale.

Room dimensions are subject to a +/- 50mm(2") tolerance and are based on a maximum dimensions in a each room.