



The Attwood.

A beautiful 2-bed home.



enquiry@help-to-own.com

The Attwood is a beautiful two-bedroom home. Along with parking provision, this property benefits from a downstairs WC a separate living room and open plan kitchen/dining room with access to the rear garden.

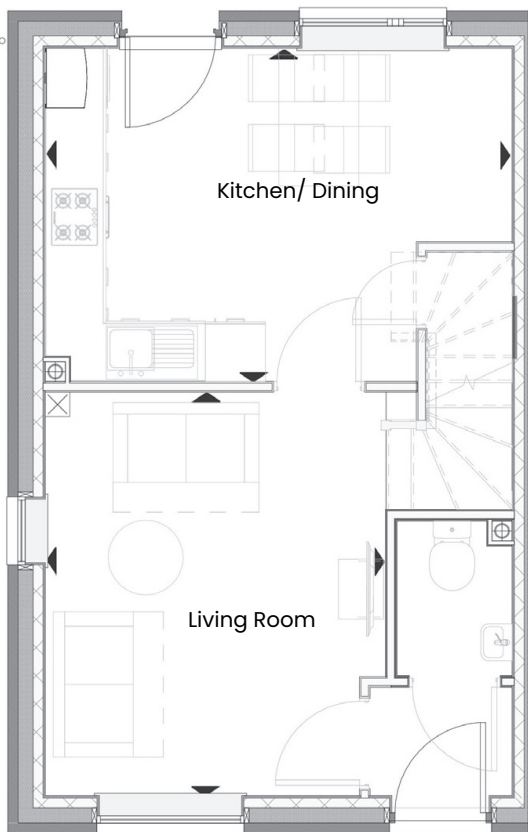
The first floor consists of two bedrooms and a family bathroom.

Ground Floor

Room Dimensions*

Kitchen/Dining 4.66m x 3.34m
15'3" x 10'11"

Living 3.17m x 4.05m
10'5" x 13'3"



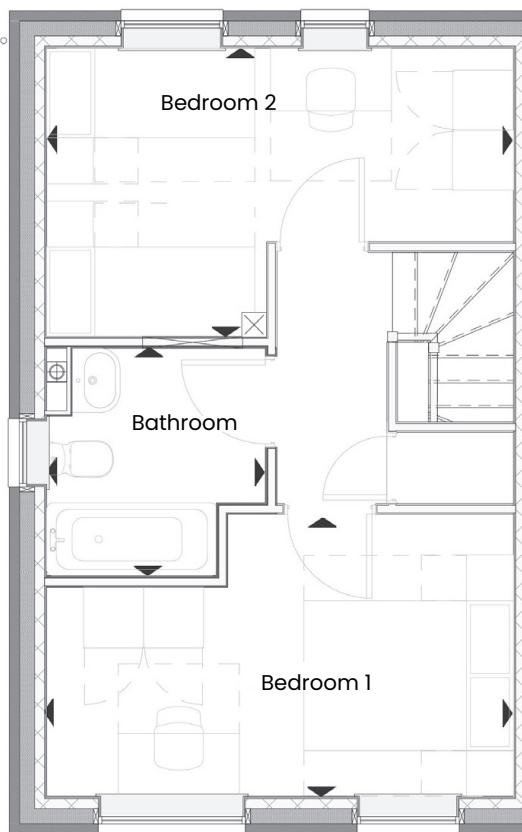
Ground Floor

First Floor

Room Dimensions*

Bedroom 1 4.66m x 2.82m
15'3" x 9'3"

Bedroom 2 4.66m x 2.90m
15'3" x 9'3"



First Floor

* Specifications: This information is for guidance only and does not form any part of a contract or constitute a warranty. Illustrations are of typical elevations and may vary. Floor plan are not drawn to scale.

Room dimensions are subject to a +/- 50mm(2") tolerance and are based on a maximum dimensions in a each room.