



# The Allsopp.

A desirable 2-bed home.



[enquiry@help-to-own.com](mailto:enquiry@help-to-own.com)

The Allsopp is a desirable two-bedroom home. Along with parking provision with carport, this property has a downstairs WC, an open plan kitchen, dining and living area which overlooks the rear garden.

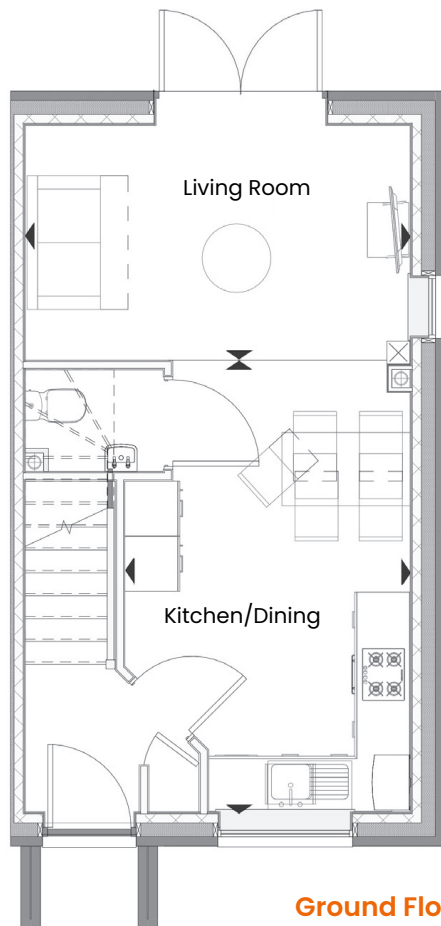
The first floor consists of two bedrooms and a family bathroom.

### Ground Floor

Room Dimensions\*

Kitchen/Dining 3.15m x 4.94m  
10'4" x 16'2"

Living Room 4.24m x 2.58m  
13'11" x 8'5"



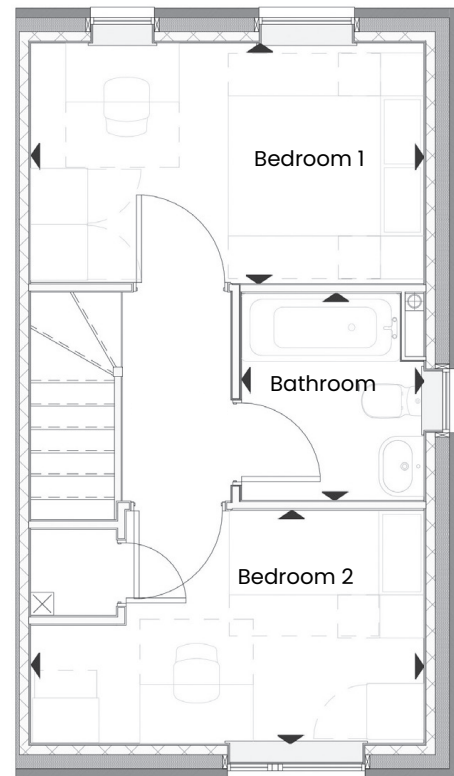
Ground Floor

### First Floor

Room Dimensions\*

Living Room 4.24m x 2.61m  
13'11" x 8'6"

Bedroom 1 4.24m x 2.5m  
13'11" x 8'52"



First Floor

\* Specifications: This information is for guidance only and does not form any part of a contract or constitute a warranty. Illustrations are of typical elevations and may vary. Floor plan are not drawn to scale.

Room dimensions are subject to a +/- 50mm(2") tolerance and are based on a maximum dimensions in a each room.